

FOOD EXPERIMENTAL ECONOMICS ONLINE WORKSHOP

Organized by Romain Espinosa
(CREM, professeur affilié Rennes School of Business)
& Ricardo Azambuja (Rennes School of Business)

PROGRAMME

MAY 21ST, 2021

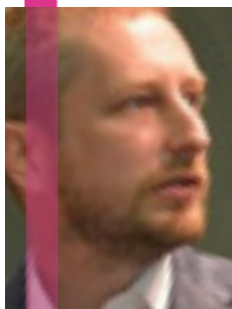


9:00 > 9:45

YOUENN LOHÉAC

Associate professor - Brest Business School
youennloheac.fr

PREFERENCES & CHOICES EXPERIMENTS
WITH REAL PRODUCTS CONSUMPTION



9:45 > 10:30

PAOLO CROSETTO

Directeur de recherche - INRAE
paolocrosetto.wordpress.com

LABELS VS INCENTIVES:
TESTING NUTRITIONAL POLICIES IN THE LAB

10:30 > 10:45



BREAK



10:45 > 11:30

NICOLAS TREICH

Directeur de recherche - TSE & INRAE
nicolastreich.com

SOME ECONOMICS OF CULTURED MEAT



11:30 > 12:15

DEIRDRE ROBERTSON

: Senior Research Officer - ESRI
: esri.ie/people/deirdre-robertson

SCAN VISUAL CUES TO PORTION SIZE REDUCE THE NUMBER OF PORTIONS OF CONSUMED? TWO RANDOMIZED CONTROLLED TRIALS

12:15 > 13:30



LUNCH BREAK



13:30 > 14:15

LAURENT MÜLLER

: Directeur de recherche - INRAE
: gael.univ-grenoble-alpes.fr/membres/laurent-muller

OBSERVING PURCHASING BEHAVIOURS: LABORATORY STORE VS. FIELD SUPERMARKETS



14:15 > 15:00

GRISCHA PERINO

: Professor for environmental economics - Hamburg University
: wiso.uni-hamburg.de/en/fachbereich-sozoek/professuren/perino/team/perino-grischa.html

MEATY ARGUMENTS: THE IMPACT OF REASONS TO REDUCE MEAT CONSUMPTION ON INTENTIONS, BEHAVIOR & SATISFACTION

15:00 > 15:15



BREAK



15:15 > 16:00

SABRINA TEYSSIER

: Chargée de recherche - INRAE
: gael.univ-grenoble-alpes.fr/membres/sabrina-teyssier

CONSUMERS' FOOD CHOICES AND THE IMPACT OF CONSTRAINTS ON GREENHOUSE GAS EMISSIONS



16:00 > 16:45

STEPHAN MARETTE

: Researcher - INRAE
: versailles-grignon.inrae.fr/economie_publicue_eng/PersonalPages2/Stephan-Marette

CAN FOODS PRODUCED WITH NEW PLANT ENGINEERING TECHNIQUES SUCCEED IN THE MARKETPLACE? A CASE STUDY OF APPLES